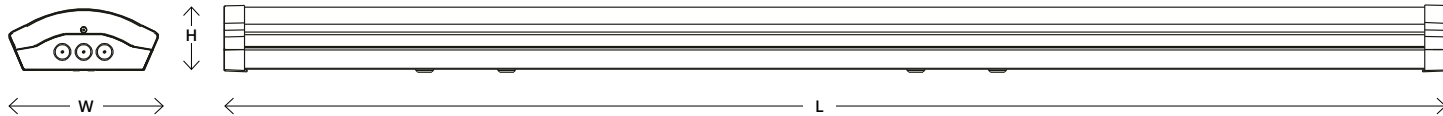


INSTALLATION INSTRUCTION

for Integral DiffusaLITE LED Wide Batten Range

(Standard, Sensor, Emergency & Multi Power & CCT options) - 5 Year Warranty



| LED Batten Model | Description 200811790 | Lumens | Product Dimensions (mm) (LxWxH) | Net Weight (Kg) |
|------------------|--|-----------|---------------------------------|-----------------|
| ILBTK101 | 4ft 20W 4000K Non-Dimmable | 2500 | 1190x200x81 | 2.1 |
| ILBTK102 | 5ft 30W 4000K Non-Dimmable | 3750 | 1490x200x81 | 2.6 |
| ILBTK103 | 6ft 40W 4000K Non-Dimmable | 5000 | 1790x200x81 | 3.1 |
| ILBTK104 | 4ft EM3HR 20W 4000K Non-Dimmable | 2500 | 1190x200x81 | 2.3 |
| ILBTK105 | 5ft EM3HR 30W 4000K Non-Dimmable | 3750 | 1490x200x81 | 2.8 |
| ILBTK106 | 6ft EM3HR 40W 4000K Non-Dimmable | 5000 | 1790x200x81 | 3.3 |
| ILBTK121 | 4ft 38W 4000K Non-Dimmable | 4750 | 1190x200x81 | 2.1 |
| ILBTK122 | 5ft 58W 4000K Non-Dimmable | 7250 | 1490x200x81 | 2.6 |
| ILBTK123 | 6ft 65W 4000K Non-Dimmable | 8125 | 1790x200x81 | 3.1 |
| ILBTK124 | 4ft EM3HR 38W 4000K Non-Dimmable | 4750 | 1190x200x81 | 2.3 |
| ILBTK125 | 5ft EM3HR 58W 4000K Non-Dimmable | 7250 | 1490x200x81 | 2.8 |
| ILBTK126 | 6ft EM3HR 65W 4000K Non-Dimmable | 8125 | 1790x200x81 | 3.3 |
| ILBTK128 | 5ft 58W MW 4000K Non-Dimmable | 7250 | 1490x200x81 | 2.7 |
| ILBTK131 | 5ft EM3HR MW 58W 4000K Non-Dimmable | 7250 | 1490x200x81 | 2.9 |
| ILBTK142 | 5ft 30W/58W 3000K/4000K/6000K Non-Dimmable | 3750/7250 | 1490x200x81 | 2.6 |
| ILBTK145 | 5ft EM3HR 30W/58W 3000K/4000K/6000K Non-Dimmable | 3750/7250 | 1490x200x81 | 2.6 |
| ILBTK148 | 5ft 58W 3000K/4000K/6000K DALI-Dimmable | 7250 | 1490x200x81 | 2.6 |
| ILBTK151 | 5ft EM3HR 58W 3000K/4000K/6000K DALI-Dimmable | 7250 | 1490x200x81 | 2.6 |

Thank you for purchasing and Integral LED product. When installed correctly this unit will provide years of service with no lamp changes required. For support or warranty information please visit www.integral-led.com/warranty. Always turn off power at the distribution unit before any maintenance or installation. Please ensure the power cannot be re-connected inadvertently.

Important Details – Please read prior to installation

Ensure the AC/Mains power is NOT connected and cannot be unexpectedly reconnected during installation.

General guidelines for installation:

1. This luminaire must be installed by a qualified electrician in accordance with the instructions provided and in compliance with recognised electrical and safety regulations relevant to the country it is being installed.
2. This is a Class I luminaire. Earth connection is required.
3. The input voltage of this luminaire is 200-240V~ 50/60Hz.
4. This luminaire is suitable for surface, pendant, conduit and BESA box mountings. Adequate for installation on surfaces with normal flammability e.g. wood, masonry. Before making the fixing hole(s), check that there are no obstructions hidden beneath the mounting surface, such as pipes or cables. It is not suitable for use on highly flammable surfaces or in flammable atmosphere.
5. This luminaire is **not suitable for dimming** with the exception of ILBTK148 & ILBTK151 which are DALI compatible.
6. No user serviceable parts.
7. Ensure mains supply is isolated before starting any work.
8. Operating Temperature -20°C to +45°C. Do not exceed.
9. Keep away from strong electromagnetic radiation sources.

10. Should the unit malfunction, return to distributor or reseller. No user serviceable parts inside. Do not disassemble or attempt to repair the luminaire outside of the installation guidelines.
11. Do not install or use the luminaire if the housing/diffuser is found to be broken.

Emergency Operation

The emergency option can be operated in maintained or non-maintained mode.

1. The luminaire delivers 360 lumens in Emergency mode.
2. Ensure the emergency battery is connected to the connector on the emergency driver.

For maintained operation:

- Connect the Live cable (Brown) to terminal (PL).
- Connect the Switch Live cable to terminal (SL).

For non-maintained operation:

- Connect the Live cable (Brown) to terminal (PL).
 - Leave terminal (SL) disconnected.
3. When powered on, the green LED indicator will illuminate indicating that the battery is being charged.
 4. To check that the emergency function is working, press the red test button at any time and the batten should illuminate in emergency mode.
 5. On failure of the permanent mains supply the fitting will switch automatically from battery charging to battery discharge powering the LED batten.
 6. This luminaire is designed to provide 3hrs of emergency light following a power failure. Please allow a full 24 hour charge before carrying a 3 hour test and mark the installation date on the LED batten label.
 7. This luminaire contains a battery. For replacement please contact Integral-LED.com
 8. Please find Testing Schedule log at the end of this installation guide.

Warranty

This unit carries a five year warranty from date of purchase, providing it has been installed correctly and not modified in any way. Should a fault occur please contact the original point of purchase.

Important Notes

1. The luminaire must be operated within the temperature range defined and avoiding extreme humidity.
2. Operation must be within rated voltage.
3. Keep away from strong electromagnetic radiation sources and protect from lightning strike.
4. Should the unit malfunction, please return it to the distributor or reseller, never attempt repair yourself.
5. Do not install the luminaire if any part is broken. Do not apply direct pressure to the front
6. The luminaire must be installed by a qualified electrician.
7. The luminaire should be positioned away from heat, liquid and vibration. Ensure no contact with any corrosive chemicals.
8. The luminaire should be mounted in free air and operated at an ambient temperature of 30° degrees.
9. Never cover the luminaire with any covers or insulation materials.
10. The luminaire should be positioned at least 1m away from radios as this may affect the signal reception. IP20 rated protection.

Settings

Detections area, hold time and daylight sensor can be set by using DIP switches on the sensor. Note that reducing the detection area will also reduce the sensitivity.

I. Detection area

- Up to 100%
- Up to 75%
- Up to 50%
- Up to 25%
- Up to 10%

| | | | | | |
|--------------------------|-----|----|----|----|------|
| | | 1 | 2 | 3 | |
| ON ↑ [Switch Icon] | I | ON | ON | ON | 100% |
| | II | - | ON | ON | 75% |
| | III | ON | - | ON | 50% |
| | IV | - | - | ON | 25% |
| | V | - | - | - | 10% |

II. Hold time

Refers to the time period the lamp remains at 100% illumination after no motion is detected.

- Up to 100%
- Up to 75%
- Up to 50%
- Up to 25%
- Up to 10%

| | | | | | |
|--------------------------|-----|----|----|----|-------|
| | | 4 | 5 | 6 | |
| ON ↑ [Switch Icon] | I | ON | ON | ON | 5s |
| | II | - | ON | ON | 30s |
| | III | ON | - | ON | 90s |
| | IV | - | - | ON | 3min |
| | V | ON | ON | - | 20min |
| | VI | - | - | - | 30min |

III. Daylight sensor

The sensor can be set to only allow the lamp to illuminate below a defined ambient brightness threshold. The settings are as follows:

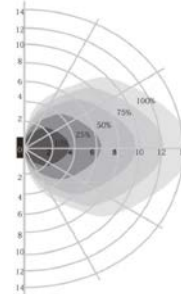
- 2lux, darkness operation only
- 10lux, darkness operation only
- 25lux, twilight operation
- 50lux, twilight operation
- Disable

| | | | | | |
|--------------------------|-----|----|----|----|---------|
| | | 7 | 8 | 9 | |
| ON ↑ [Switch Icon] | I | ON | ON | ON | 2lux |
| | II | ON | ON | - | 10lux |
| | III | ON | ON | - | 25lux |
| | IV | ON | - | - | 50lux |
| | V | - | - | - | Disable |

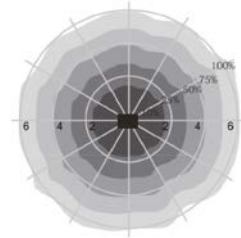
Specifications

| | |
|-----------------------|---|
| Operating voltage | 220~240Vac, 50Hz |
| Rated load | 400W (inductive), 800W (resistive) |
| HF system | 5.8GHz±75MHz, ISM wave band |
| Transmitting power | <0.5mW |
| Power consumption | ≤0.5W (standby) |
| Detection zone | Max. (D x H): 12m x 6m |
| Detection sensitivity | 10% / 25% / 50% / 75% / 100% |
| Hold time | 5s / 30s / 90s / 3min / 20min / 30min |
| Daylight sensor | 2lux / 10lux / 25lux / 50lux / Disable |
| Mounting height | 6m Max. |
| Motion detection | 0.5~3m/s |
| Detection angle | 150° (wall installation) 360° (ceiling installation) |
| Operating temperature | -20~60° C |
| IP rating | IP20 |

Detection Pattern

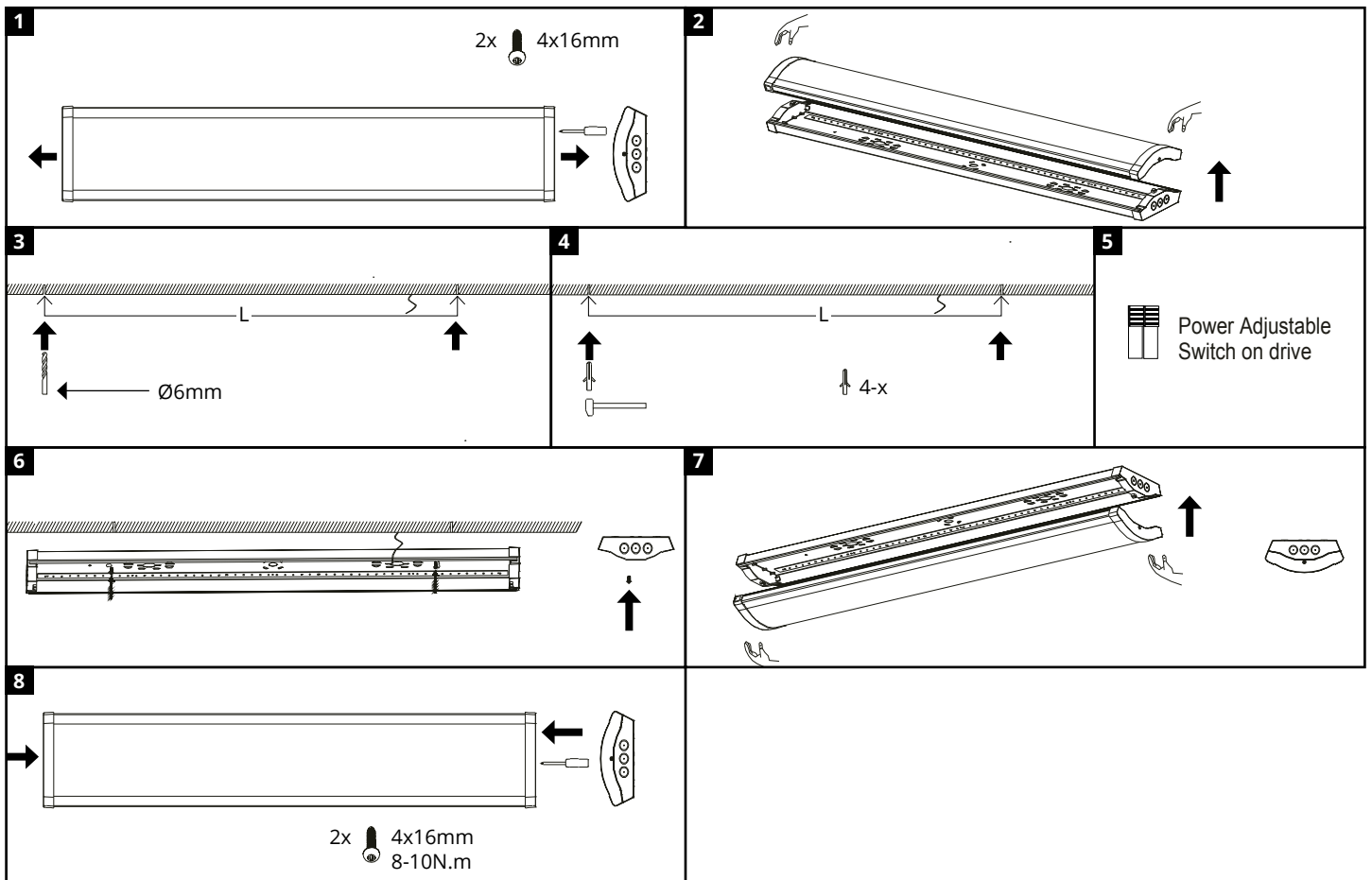


Wall mounting pattern (Unit: m)
Suggested installation height: 1.5m



Ceiling mounting pattern (Unit: m)
Suggested installation height: 3m

*When set to Disable, the daylight sensor will switch on the lamp when motion is detected regardless of ambient light levels.



Test Schedule to record monthly functional test and yearly 3 hour duration test for emergency version. All testing should be planned and incorporated as part of a managed programme with appropriate risk assessment to ensure operational emergency function is not compromised during testing.

| | | | | | | |
|---------------------------------|---|-------------|------------------|-------------|---------------|-------------|
| Panel Ref/Location | In case of difficulty, contact the Installation Engineers: tel. | | | | | |
| Full Recharge Time 24 Hours | | | Duration 3 Hours | | | |
| TEST RECORD | | | | | | |
| | Year 1 | | Year 2 | | Year 3 | |
| Monthly Test | Signed | Date | Signed | Date | Signed | Date |
| Functional | | | | | | |
| Functional | | | | | | |
| Functional | | | | | | |
| Functional | | | | | | |
| Functional | | | | | | |
| Functional | | | | | | |
| Functional | | | | | | |
| Functional | | | | | | |
| Functional | | | | | | |
| Functional | | | | | | |
| Functional | | | | | | |
| Functional | | | | | | |
| Three Hour | | | | | | |