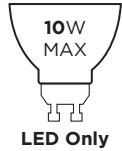


integral LED



INSTALLATION INSTRUCTIONS

Evofire Fire Rated Downlight



RANGE - 3 YEAR WARRANTY

Thank you for purchasing an INTEGRAL LED product. When installed correctly this unit will provide years of service. For support or warranty information please see integral-led.com.

Product Codes	Required Lamp Type
ILD LFR60D104	GU10
ILD LFR60D105	GU10
ILD LFR60D109	GU10
ILD LFR70K168	GU10
ILD LFR70K169	GU10
ILD LFR70K170	GU10
ILD LFR70K173	GU10
ILD LFR70K182	GU10
ILD LFR70K183	GU10
ILD LFR70K184	GU10

Product Codes	Required Lamp Type
ILD LFR43D060	MR11 GU10
ILD LFR43D061	MR11 GU10
ILD LFR43D062	MR11 GU10
ILD LFR43D065	MR11 GU10

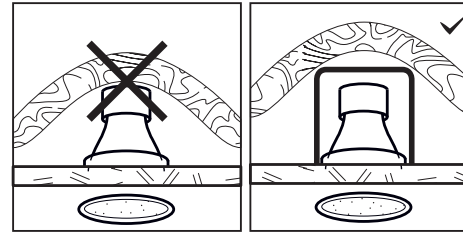
Important Details - Please Read Prior to Installation

1. Ensure the AC/Mains power is NOT connected and cannot be unexpectedly reconnected during installation.
2. This product must be installed by a qualified electrician in accordance with instructions provided and in compliance with recognised electrical and safety regulations relevant to the country in which it is being installed.
3. This product must not be used with non-LED lamps.
4. This downlight range is designed to be installed in a ceiling tile / plasterboard / solid material, with a thickness of 3mm (minimum) to 30mm (maximum).
5. This product is for indoor use only.
6. The product should NOT be covered with insulation material at any time unless using with an optional insulation guard. Insulation guards are sold separately.
7. Minimum clearance is 50mm above the installed fitting and should NOT be installed within 50mm of any joist.
8. Do NOT scratch or remove product coating during installation as this may lead to discolouration of ceiling materials.
9. Earth wire is provided if required.

Product Compliance

Fire rated for 30, 60 and 90 minute ceilings to EN 1365-2, and in compliance with BS 476 Part 21. Compliant to Part B - Fire Safety, Part C - Moisture Protection, Part E - Acoustic Resistance and Part L - Energy Efficiency (when used with efficient LED Lamps) of the Building Regulations. Please check integral-led.com/en/content/rating.

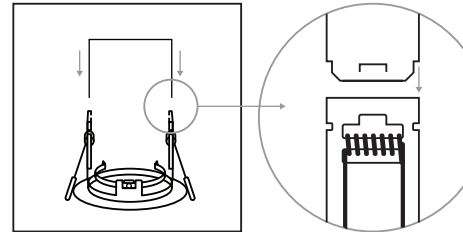
Use with Insulation



The product should not be covered with insulation material unless using with an optional insulation guard.

Insulation guards sold separately.

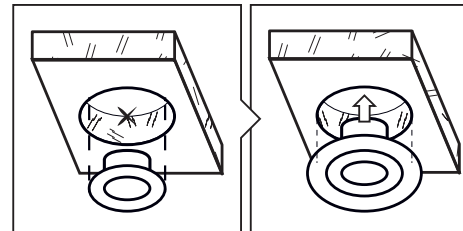
Attaching the Insulation Guard



If insulation needs to be laid on top of the Evofire product, an insulation guard is required. To install the insulation guard, **push tabs into the Evofire body until they lock into place.**

Insulation guards sold separately.

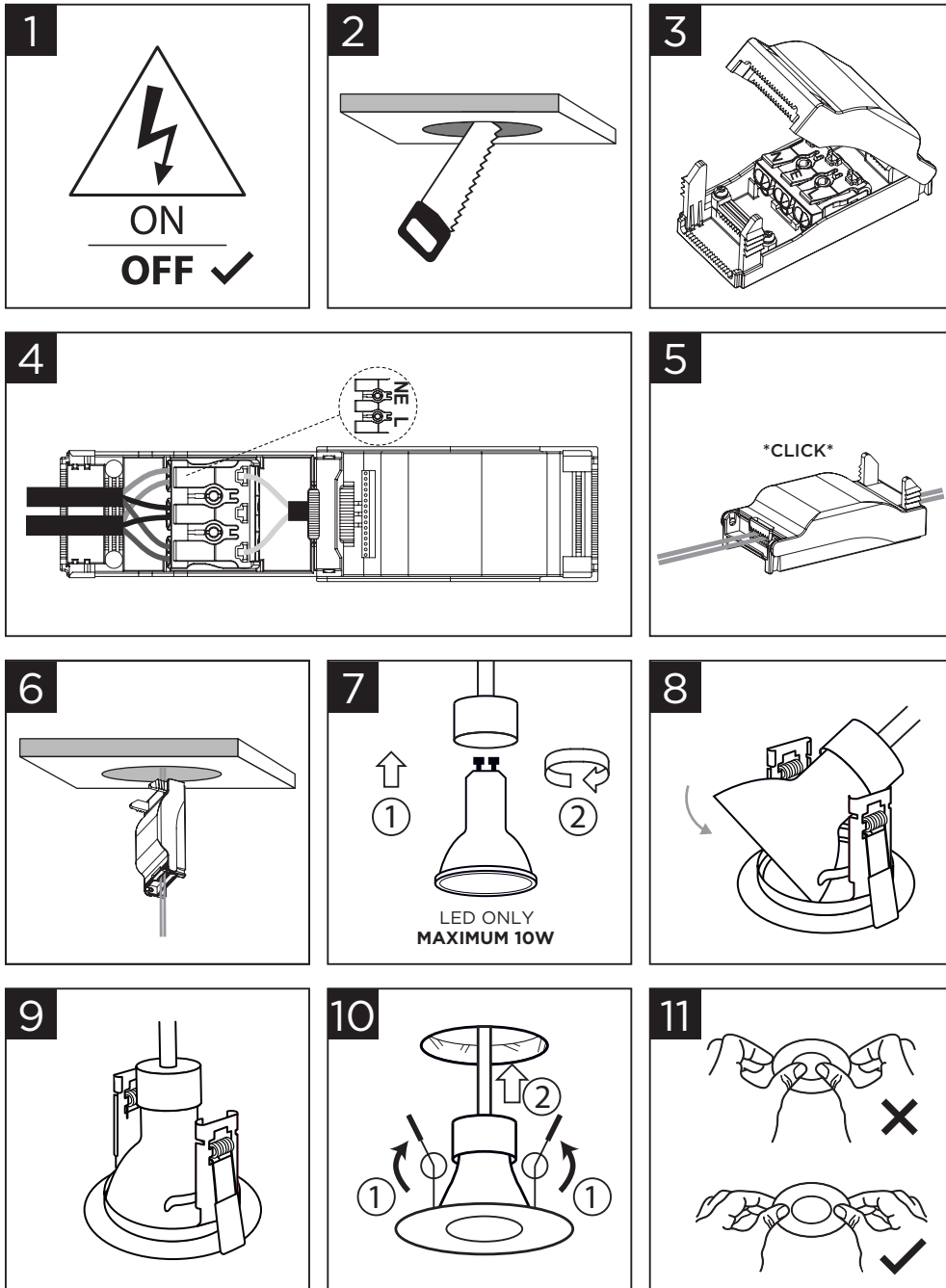
Cut-Out Adapter



If the hole is greater than maximum cut-out size, an adapter can be used to increase the size of the product.

Adapter sold separately.

Installation Instructions



1. Switch OFF the mains power and ensure it cannot be unexpectedly reconnected (fig. 1).
2. New installation - carefully cut a hole to the required size using a suitable cutting tool (fig. 2).
3. Refurbishment installation - ensure the hole is suitable and robust enough to hold this product. If the hole is larger than the cut-out size for the product, adapter accessories are available to extend the cut-out size (sold separately).
4. Open the junction box (fig. 3) and carefully connect the terminal block to a suitable incoming AC mains cable using the correct polarity to the marked terminals (fig. 4).
 - L = Live power (brown)**
 - N = Neutral power (blue)**
 - E = Earth (green/yellow)**, if required.
 - Fixture is Class II - an Earth connection is not required. An Earth connection has been included should this be necessary for your installation.
 - If required connect loop-in and loop-out connections with the correct polarity.
5. Close the junction box and ensure the mains cables are correctly gripped (fig. 5).
6. Feed junction box through cut-out hole and place in ceiling void (fig. 6).
7. Insert GU10 lamp (sold separately) into lamp holder, and screw in place (fig. 7).
8. Attach lamp to Evofire body by sliding lamp into metal retainers (fig. 8 & 9).
9. Carefully raise the springs and place the downlight into the hole, ensuring the driver and mains cable are not trapped (fig. 10).
10. Position the downlight in the hole and ensure the bezel is flush with the ceiling plasterboard or other material. **Do not press on glass while installing, this can damage the product affecting safety and fire rating** (fig. 11).
11. The springs will automatically secure the downlight in place upon insertion.
12. Check the circuit and safely switch ON the power when required.