

SMART WIFI ILSTRGBB263B-EU PLUG & PLAY RGB STRIP KIT



IS 1001



HANDLE WITH CARE

1. Do not use in humid or high temperature environments
2. Do not affix to/cover with fabric



3. DO NOT power up the strip while still on the packaging reel.



4. Only cut the strip at cutting points, with the power disconnected.

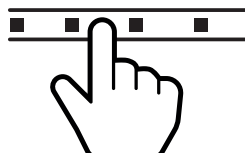
1

INSTALLATION

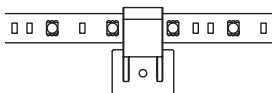
PLEASE NOTE: Ensure power is NOT connected before proceeding



- 1.1 Once you have checked the position of the strip and power connection, carefully apply the strip to the surface by continuously removing a portion of the adhesive backing tape as required.



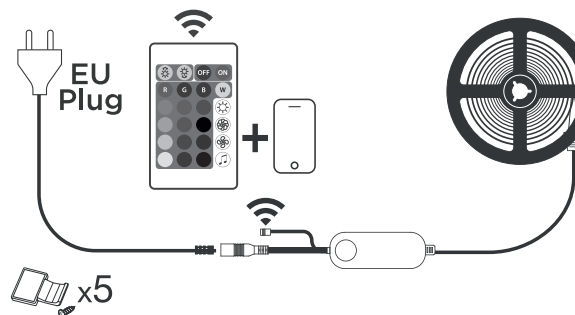
- 1.2 Stick the strip and carefully press down on the strip for about 10secs (avoid pressing on the LEDs).



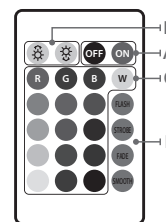
- 1.3 For a durable and secure installation, add the provided clips and screws approx. 1m apart. Alternative screw fittings may be required depending on the surface.

2

OPERATION



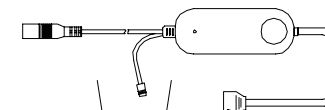
Connect the power supply, controller, and light strip. Then connect it to the AC power grid.



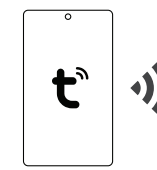
Remove the tab at the bottom of the remote to power the battery

- A. Switch ON/OFF
- B. Dimming and Speed Change (of colour changing functions)
- C. Select colours
- D. Colour changing functions

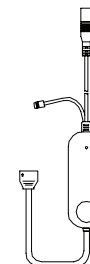
WARNING:
BUTTON BATTERY INCLUDED KEEP AWAY FROM CHILDREN



The remote control should face the infrared receiver directly, within 5 metres.



Control within the WIFI signal range



Scan the QR code on the label of the remote control to download the TUYA app.

Follow the download and installation prompts to control the strip via the TUYA WIFI app on your mobile phone.